

# Overview of the paediatric SCI healthcare journey (NSW)

## Discharge home

Before discharge you will be linked into one of the outpatient services.

- Rehab2Kids at SCH
- Kids Rehab at CHW
- HNEkidsRehab Services

You will see the team in their specialist clinic once or twice a year depending on your needs.

You will also be referred to a local outreach service. If you are located in metropolitan Sydney this will be the Paediatric Spinal Outreach Service (PSOS). If you live in a rural area you will be referred to a rural service.

## Transition (around 18 years)

Around 18 years of age you will transition to an adult SCI outpatient clinic located at Prince of Wales Hospital, Randwick or Royal Rehab, Ryde.

You will also transition from PSOS to the NSW Spinal Outreach Service (SOS), Rural Spinal Cord Injury Service, or Hunter SCIS team.

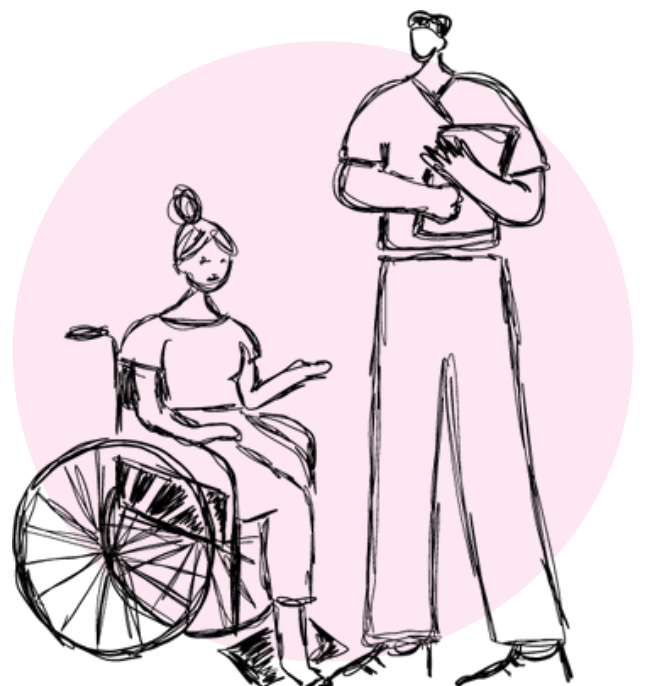
## Time of injury

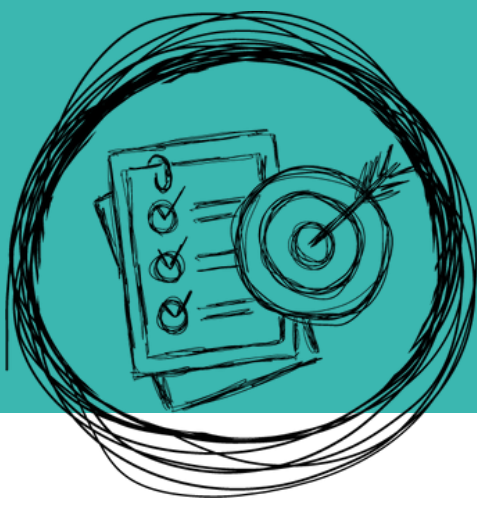
Inpatient rehabilitation will most likely take place at the Sydney Children's Hospital, Randwick (SCH) or The Children's Hospital at Westmead (CHW).

If you are 16yrs or older you may complete your inpatient rehabilitation in an adult SCI Unit.

## Preparing for transition (16 years)

Trapeze or the ACI Transition Care Network will support young people and their parents/caregivers with the transition to adult healthcare services.





# Overview of the paediatric SCI healthcare journey (NSW)

